

SOUTHERN ONTARIO CHAMBER MUSIC INSTITUTE

*20th Anniversary
1988~2008*

2007-2008 BOARD OF DIRECTORS

PRESIDENT

Tag Watson

*Corporate Communications
Executive*

PAST PRESIDENT

Bill Chambers

*Educator, Musician,
Arts Administrator*

TREASURER

Mark Woodruff

Chartered Accountant

FOUNDING DIRECTOR

Ann Vallentyne

Musician, Music Educator

DIRECTORS-AT-LARGE

Suzy Godefroy

*Sponsorship, Marketing
& Events Manager*

Darlene Brown

*Corporate Communications
Manager*

John Muldoon

*Manager,
Communications
& Public Affairs*

Dr. Abigail Richardson

Composer

EX-OFFICIO

INSTITUTE PROGRAM DIRECTOR

Adrianna Ficzer

aficzer@socmi.org

BUSINESS MANAGER

Rosanne Caruso

rcarus@socmi.org

115 GEORGE STREET, SUITE 512

OAKVILLE, ON L6J 0A2

905-842-5865

1-888-886-4604

www.socmi.org

CHARITABLE NUMBER

89094 0042 RR0001

CASE FOR SUPPORT

EXECUTIVE OVERVIEW

SOCMI provides gifted string and piano musicians with an enriched learning syllabus. Our program offers an in-depth study of chamber music under the direction of our internationally-acclaimed faculty. Through a unique mentoring experience, students learn to apply their individuality to their music ~ learning not only from their mentors but also from each other.

Participants come into the program as accomplished music students and come away as members of new chamber music ensembles. Teamwork, problem solving, leadership and communication skills are just some of the by-products of this one-of-a-kind learning experience.

The two week intensive program provides individual lessons, ensemble coaching, master classes, open rehearsals and guest lectures. Performances by faculty and guest artists are an integral part of the learning experience. The program takes place at Appleby College in Oakville, Ontario. The program culminates with the Student Showcase concert which features the repertoire of the newly formed student ensembles.

SOCMI'S MISSION & PURPOSE

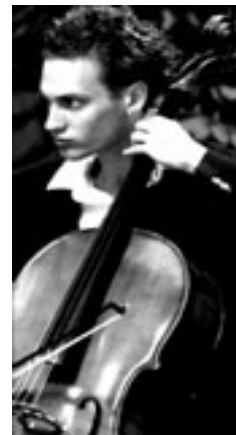
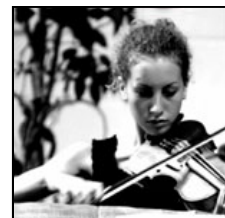
SOCMI is an independent, non-profit, educational organization. Institute educational programming is funded by private individuals, businesses, granting agencies and foundations.

Since its founding in 1988 by cellists/educators Ann Vallentyne and Zdenek Konicek, the Institute has focused on the study of chamber music in the quest for complete musicianship. SOCMI has coached and mentored hundreds of gifted young musicians.

OUR MISSION

"To provide a unique, educational chamber music opportunity for young musicians and to heighten public awareness and appreciation of chamber music."

SOCMI'S role is to develop young chamber musicians and to make their music publicly accessible. Students and alumni are featured regularly at community events and given the opportunity to be seen and experienced by the general public as often as possible. Many of SOCMI's former students have successful careers as professional musicians with several of our alumni performing and teaching across North America and Europe.



2007 DONORS & SPONSORS

LEADERS' CIRCLE

Maestro \$10,000+

Newalta Corporation

Septet \$7,000+

Ann Vallentyne

Sextet \$6000+

The Community Foundation
of Oakville

Tag Watson

Quintet \$5,000+

Appleby College

The Wilson Foundation

Trio \$3,000+

Rosanne Caruso

Dupont Performance Coatings

Carlene & Bill Mercer

Oakville Arts Council

Duet \$2,000+

Adrianna Ficzer

Solo \$1,000+

CNW Group

Molly Ann & Henry Schwarcz

BENEFACTORS \$500-\$999

Bill Chambers

Oakville Place

Strewn Winery

Paradiso Ristorante

Carmen's at Oakville

Conference & Banquet Centre

PATRONS \$250-\$499

Dr. Jeremy Bell

Sonja & George Buckland

The Knowledge Tree

Chocolates by Bernard Callebaut

SUPPORTERS \$100-\$249

Laura Brailsford

Jean Grieve

James Moto Enterprises Inc.

Duet Club of Hamilton

Merriam Music

Michael Gerard Management

Vernon Turner

Oakville Symphony

Anonymous

Sally Jackson

Starbuck's Coffee

Oakville Centre

FRIENDS Up to \$99

Debbie Daymond

Amy Doolittle

Downtown Oakville BIA

Paul Eck

Donna Green

L'Atelier Grigorian

2008 FINANCIAL SYNOPSIS

2008 Budgeted Summer Institute & Concert Costs

Facility rental, lodging, meals	\$	22,000
Faculty Costs		17,400
Program Director, House Manager		4,600
Outreach, recruitment & auditions		3,000
Concert Series Costs		22,000
Promotion & Community Awareness		5,000
Administrative Costs		5,000
Insurance and Audit		7,000
		<u>\$ 86,000</u>

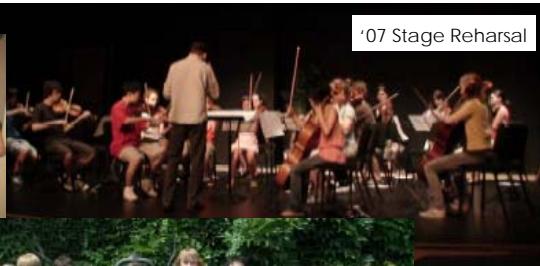
Projected Revenue & Fund Generation

Tuition	\$30,000	
* Bursaries provided	<u>- 11,000</u>	\$ 19,000
Concert ticket revenue		5,000
Individual donations		10,000
Corporate sponsorships, donations		30,000
Foundations & Gov't Grants		20,000
Other Fundraising Activities		<u>2,000</u>

* Bursaries are made available to applicants accepted into the program on artistic merit and in need of additional financial support.



'07 Quintet
from Saskatoon



'07 Stage Rehearsal



2007
SOCMI
Students

For 20 years, the Southern Ontario Chamber Music Institute has influenced the lives and careers of promising young musicians. It continues to provide the inspiration to achieve greatness and the confidence to express artistic individuality in musicianship.

SOCMI continues to affect the Canadian artistic landscape by furthering the appreciation of chamber music through advocacy, development, mentorship and inspiration. The financial support of individual donors, corporate partners, grantors and foundations has played a critical role. We look to the ongoing financial and philosophical support of these important *Stakeholders in the Arts* to make it possible for SOCMI to continue to develop and build capacity.

SOCMI ALUMNI *Success Stories*

Daniel Bard, violin, member of the Nagoko Chamber Orchestra, Japan. Principal Player of the Tel Aviv Soloists in Israel and the Camerata Nordica in Sweden.

Dr. Jeremy Bell, violin, member of the Penderecki String Quartet, in residence at Wilfred Laurier University.

Laura Bellhouse, violin/viola, graduated with a Bachelor of Music June 2007 and studies with Mark Gothoni in Berlin, Germany.

Caitlin Boyle, viola, member of the Cecilia String Quartet – finalist at the Melbourne String Quartet competition July 2007. Former member of the Gemini String Quartet. Recently completed performance diploma with Harihoff Schlichtig in Munich, Germany.

Andrew Deaville, cello, member of the Munich Youth Orchestra, currently on a Rotary Exchange in Germany.

Rachel DeSoer, cello, member of Lloyd-Carr-Harris String Quartet, McGill University, finalist at the Melbourne String Quartet Competition July 2007.

Adrian Fung, cello, member of the Afiara String Quartet, competitor at the 9th Banff International String Quartet Competition, August 2007.

Arlen Hlusko, cello, currently studying at The Wyatt Artist-in-Residence program Mount Royal Conservatory.

Ivan Ivanovich, violin/viola, pursuing Master's Degree at the Juilliard School in New York in the viola class of Masao Kawasaki, member of the Sonora String Quartet. Winner of the 2006 "Galaxie Chamber Music Marathon" CBC.

Nadia Klein, cello, former member of the Gemini String Quartet. Master of Music in Performance and a Professional Studies Diploma, San Francisco Conservatory.

Sharon Lee, violin, member of the Cecilia String Quartet – finalist at the Melbourne String Quartet competition July 2007

Victoria Lindsay, violin, Principal Second violin Victoria Symphony, former member of the Gemini String Quartet.

Max Mandel, viola, former member of the Metro String Quartet. Current group affiliations: Yo-Yo Ma's Silk Road Ensemble, Kirby String Quartet, Flux Quartet, The Caramoor Virtuosi, The Metropolitan Museum Artists, Toronto Camerata, Il Furioli Baroque Ensemble.

Meredith McCallum, violin, Bachelor of Music McGill University 2006. Currently in graduate studies at the San Francisco Conservatory of Music. Boris Brott National Academy Orchestra, Apprentice 2006.

Kenin McKay, violin, Masters of Music in Performance UofT 2007, Women's Musical Club of Toronto Centennial Scholarship 2006, Boris Brott National Academy Orchestra, Apprentice 2006.

Akemi Mercer, violin, former member of the Gemini String Quartet. Winner of the 2003 "Galaxie Chamber Music Marathon" CBC. Completed Bachelor of Performance UofT and Diploma program at Hochschule fur Music in Koln, Germany. 2006 Semi-finalist Eckhardt-Grammatte National Music Competition. Member of Via Salzberg Chamber Orchestra, Toronto.

Rachel Mercer, cello, member of the Aviv String Quartet, Paris, France. Member of the Les Amis Ensemble. Former member of the Metro String Quartet. Principal cellist Via Salzberg Chamber Orchestra, Toronto. Grand prize winner of the 2001 Vriendenkran Competition in Amsterdam.

Katherine Mrmak, viola, graduated Bachelor of Music, Wilfred Laurier University. Apprentice, Boris Brott National Academy Orchestra 2006

Aissilinn Noskey, violin, member of the Kirby String Quartet, assistant principal second violin Canadian Opera Company 2003-05. Affiliations include: National Ballet, TSO, Tafelmusik Baroque Orchestra, Seiler Strings, Il Furioli Baroque Ensemble.

Elizabeth Orr, violist, assistant principal violist of the Philharmonic Orchestra in Luebeck, Germany.

Espeth Poole, cello, recitalist and chamber musician. Master's degree at the Juilliard School. Her ensembles have won prizes, including the Max Pirani Trio Prize, and the Harold Crarton Prize in London.

Michael Schulte, violin/viola, member of the Turini Schulte Bloemental Piano Trio. Avid teacher. frequent SOCMI faculty member. Premiered A. Richardson's "Pull", SOCMI's first commissioned work and premier of a Canadian work recorded live by CBC radio.

Kirk Starkey, cello, Suzuki cello instructor for Suzuki Music in Ottawa. Principal cello with The Ottawa Chamber Orchestra.

Monica Westerholm, violin, currently pursuing a Bachelor of Performance Degree and the University of Toronto.

2008 SPONSORSHIP OPPORTUNITIES

“LEADERS’ CIRCLE” . . . *Sponsors in the \$1,000+ category*

- Logo on concert marketing materials
- Logo on concert signage
- Logo in Concert Program Book (see DISTRIBUTION below)
- Logo on website with link to your website for one full year
- Company name in concert media releases
- Company name on signage that accompanies student ensembles performing at community events throughout the year & various benefits in the individual opportunities as follows . . .

Summer Concert Series Sponsor – 4 Concerts *Sponsored by NEWALTA* \$10,000

- 16 “Special Guest” tickets to the concert series with preferred seating
- Public acknowledgement from the stage at each concert
- Recognition throughout the campaign as Lead Sponsor
- Opportunity to speak on behalf of your company at Receptions

Website Sponsor \$5,000

- 8 “Special Guest” tickets to the concert series with preferred seating
- Banner ad on each main page of the website from Jan – Dec 2007

Single Concert Sponsor

Afiara String Quartet \$5,000
Concert - Thu Aug 7

Penderecki String \$5,000
Concert - Thu Aug 14

20th Anniversary \$5,000
Concert - Sat Aug 16

Premiere of work for student chamber orchestra composed by Abigail Richardson

Student Showcase \$4,000
Concert - Sun Aug 17

- 8 “Special Guest” tickets to the concert series with preferred seating
- Public acknowledgement from the stage with opportunity to address audience and introduce the ensemble
- Photo with performers at the concert you’ve sponsored

Concert Program Book Sponsor \$3,000

- 6 “Special Guest” tickets to the concert series with preferred seating
- Full page ad on back cover AND acknowledgement and thanks from SOCMl inside

DISTRIBUTION: 600-800 attending the 4 concerts and as informational piece to prospective donors and funders for 12 months

Reception Sponsor \$2,500

- 4 “Special Guest” tickets to the concert series with preferred seating
- Public recognition at Reception and opportunity for 2 minute speech
- Photo with guests and students

Student Bursary Fund \$1,500

- To support qualified students in need of tuition assistance
- 2 “Special Guest” tickets to the concert series with preferred seating

Advertising Sponsor \$500

- ½ page ad in Concert Program Book (see DISTRIBUTION above)
- Company name listed as “Benefactor” for one year